



NEW BRIGHTON

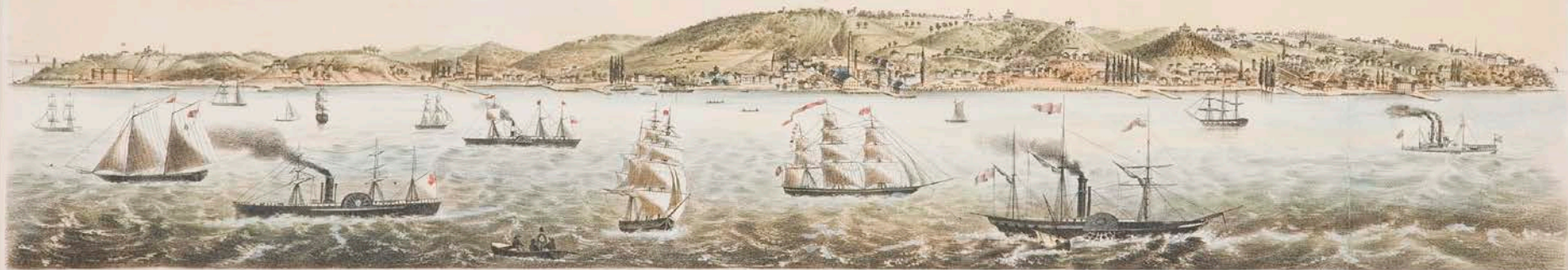


FACTORYVILLE



PORT RICHMOND

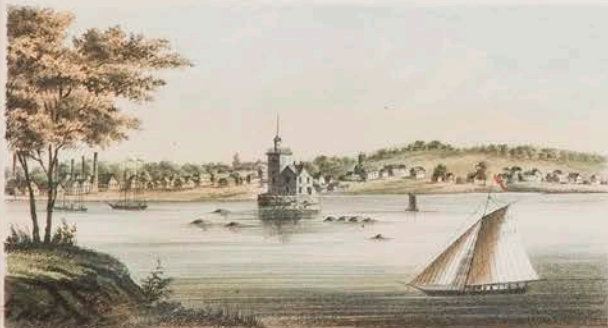
BAY STREET CORRIDOR AN ILLUSTRATED HISTORY



CLIFTON

STAPLETON

TOMPKINSVILLE



MARINERS' HARBOR



RICHMOND



TOTTERVILLE

H. Knacht Del.

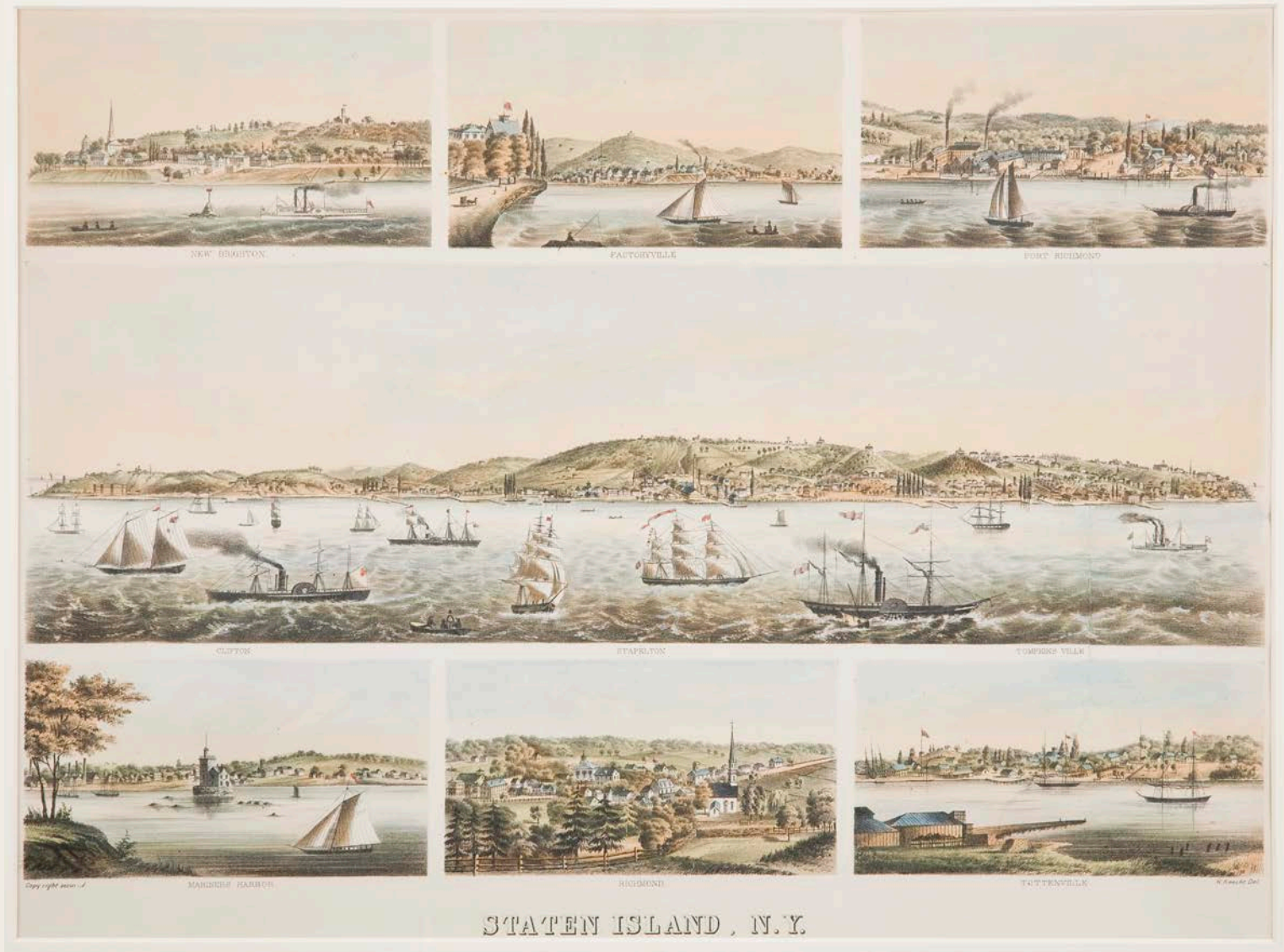
Copy right secured

STATEN ISLAND, N.Y.

**The Preservation League of Staten Island
Presents**

**BAY STREET CORRIDOR
AN ILLUSTRATED HISTORY**

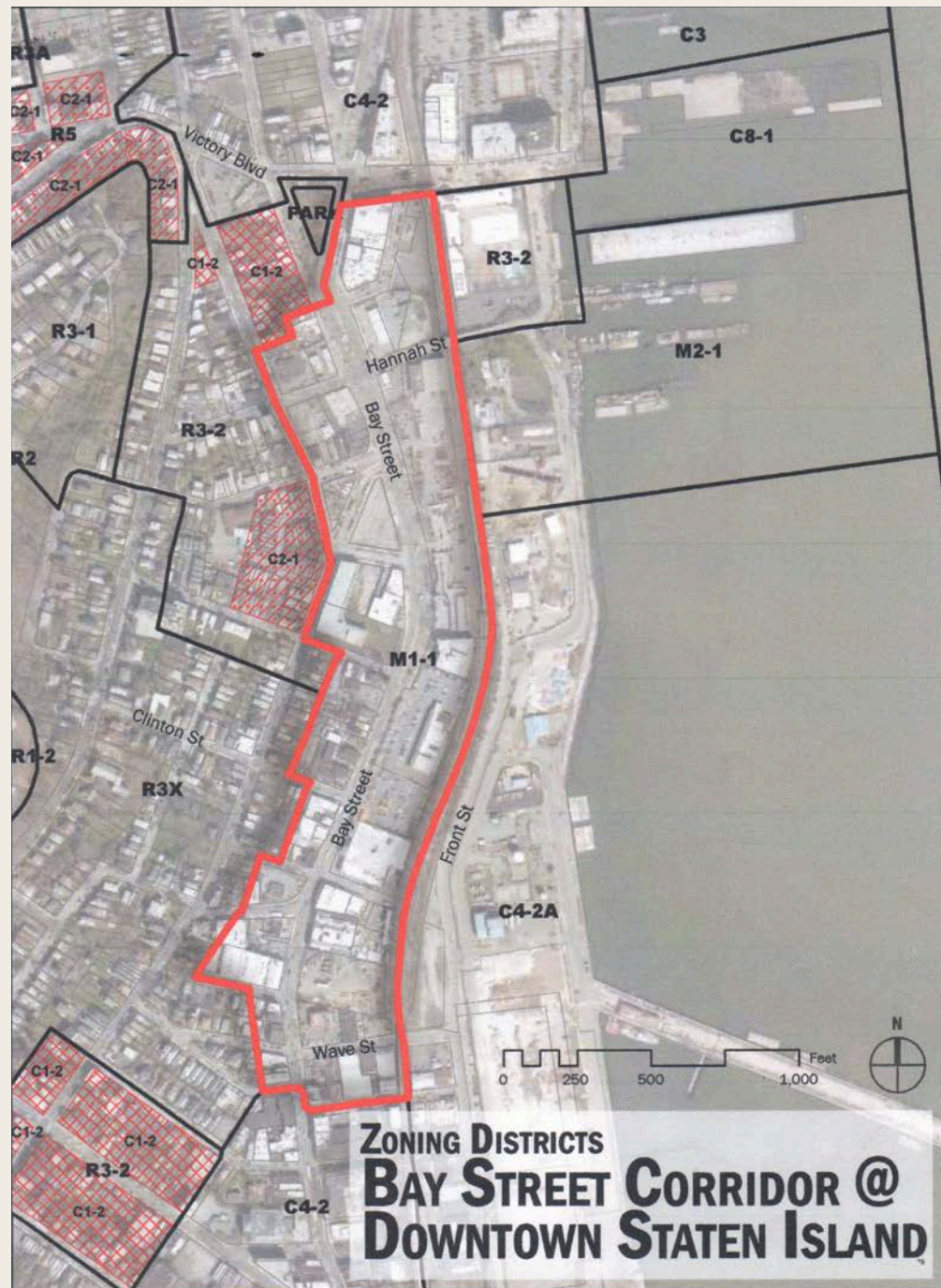
by
Barnett Shepherd
Executive Director



Staten Island, N.Y. By H. Knecht, 1864-1867. Lithograph, 23 $\frac{3}{4}$ x 29 $\frac{1}{4}$ in.
 Staten Island Historical Society (P02.0001)



Staten Island, N.Y. By H. Knecht, 1864-1867. (Detail)

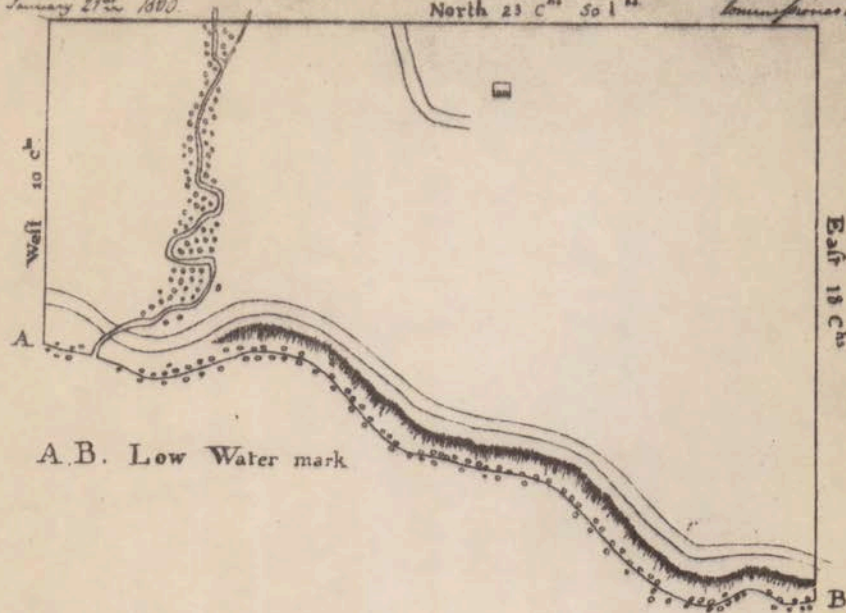




View of the Narrows Between Long Island and Staten Island . . . 12th July, 1776.
Ink and wash drawing by Archibald Robertson. New York Public Library Print Collection.

The Commissioning of the boundary line around thirty acres of land taken on the east end of Blenheim for Marine Hospital & City Beginning at low water mark on the south side of the mill & called the Salween place of a Police nineteen feet above the Southernmost part of a large Rough marked near the top on the westerly side with the letter A. out on it. Gabriel Sweeney Commissioner of the N.Y.

New York January 27th 1880. North 23° 30' E. 501 ft.



Survey & map of heavy soils of Land on the East of Staten Island
(Not comprehending the High way of Fifty Lakes in Breadth) the property of
the Episcopal Church on that Island for the use of the State of New York for the
Erection of a Marine Hospital & for the accommodation of the United States
pursuant to a Law of the State of New York, Entitled "an act to amend an act
entitled "an act to provide against infectious & pestilential Diseases" passed 15 June
1799. Beginning at Low water mark on the South Side of the Small

1999. Beginning at Low water mark on the south side of the small
cove called the watering place & running thence due west ten chains thence
due north twenty three chains fifty links thence due East Eighteen chains at
low water mark, thence southerly along low water mark to the place of
beginning

Done on the 13th day of April 1799

(Carica) By Joseph McKim

Filed Map 1, April 13, 1799,
signed by Joseph W. Mangin,
City Surveyor. Staten Island
Borough Hall Topographical
Division.



VIEW OF THE NEW YORK QUARANTINE, STATEN ISLAND.

Published by PARKER & CO. 166, and by LEWIS P. CLOVER, 100 Fulton Street, New York.

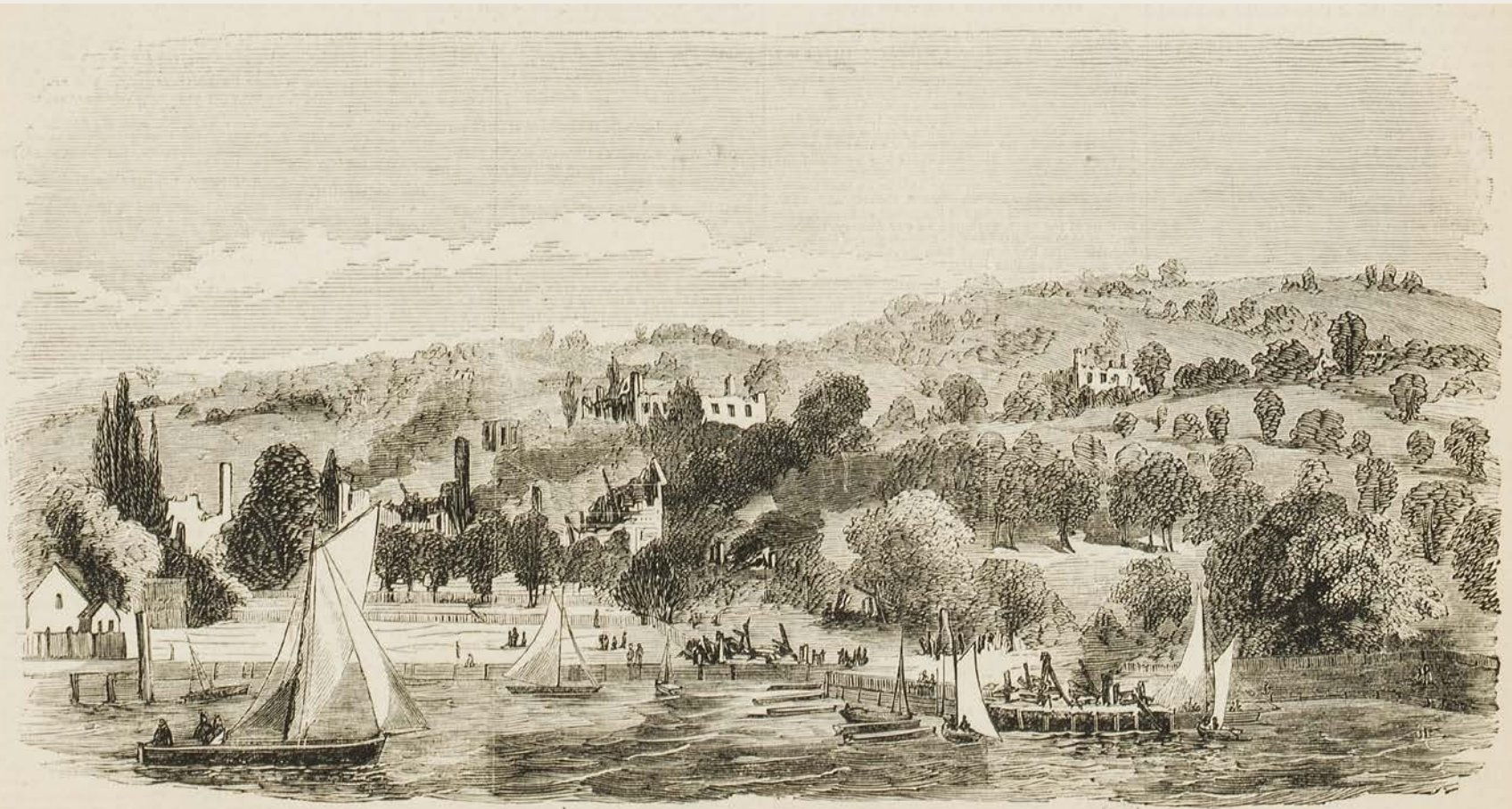
Entered according to Act of Congress in the year 1833 by WILLIAM J. BENNETT in the office of the Clerk of the Southern District of New York.

Printed according to Act of Congress in the year 1833 by WILLIAM J. BENNETT in the office of the Clerk of the Southern District of New York.

View of the New York Quarantine, Staten Island. Aquatint by William James Bennett, 1833.
Library of Congress.



View of the Quarantine Grounds and Buildings. Staten Island, May 1858. By George Hayward.
Lithograph. Staten Island Museum.



THE RUINS OF THE QUARANTINE ESTABLISHMENT, ON STATEN ISLAND.

The Ruins of the Quarantine Establishment, on Staten Island. Artist unknown.
Woodcut from *Harper's Weekly*, Sept. 11, 1858. Staten Island Historical Society.



Arietta Street. Oil on Canvas by C. Roch, 1863. Staten Island Historical Society.



Vanderbilt Cottage. Photograph, ca. 1920. Staten Island Museum.



Planters Hotel. Photograph, 1962. Edna Holden Collection, Staten Island Historical Society.

American Views.



Parts of Pavilion Hill and Ward Hill. Photograph by H. Hoyer, 1859 or 1860.
Half Stereograph. Staten Island Historical Society.



Vanderbilt House. Photograph by C. Delavan Jr., ca. 1905. Staten Island Historical Society.



Bay Street. Photograph from *Parish's Art Work of Staten Island*, 1894. Staten Island Historical Society and Staten Island Museum



Tompkinsville Landing. Photograph, 1880-1890. Staten Island Historical Society.



Tompkinsville. Photograph by R. Kienzle, 1885-1890.
Staten Island Historical Society.



Baltimore Flats. Photograph by Herbert Flamm, 1956. Staten Island Historical Society.



Baltimore Flats. Photograph by Herbert Flamm, 1956. Staten Island Historical Society.



**Bird's-Eye
View of
Stapleton.**
Copyrighted
by Thos. J.
Hughes,
1905.
Staten Island
Museum.



Bird's-Eye View of Stapleton. Copyrighted by Thos. J. Hughes, 1905 (Detail).
Staten Island Museum.



Bird's-Eye View of Stapleton. Copyrighted by Thos. J. Hughes, 1905 (Detail). Staten Island Museum.



View from Rubsam's Dock. Cabinet Card Photograph by Issac Almstaedt, 1888.
Staten Island Museum.



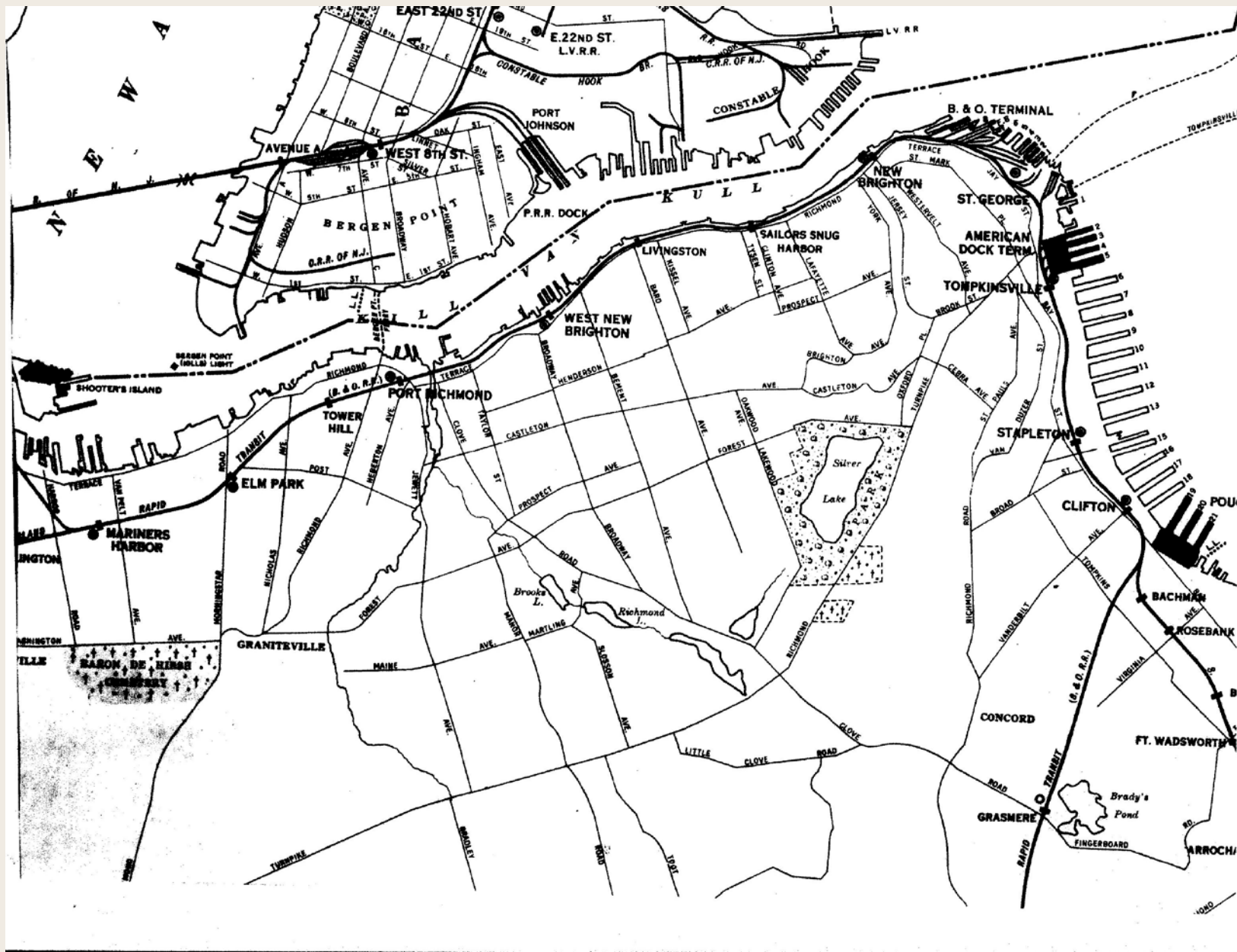
Municipal Piers, Stapleton. Photograph, ca. 1925. Former Borough Hall Collection. Staten Island Historical Society.



Municipal Piers. Photograph by Herbert Flamm, 1956. Staten Island Historical Society.



Municipal Pier. Photograph by Herbert Flamm, 1956. Staten Island Historical Society.



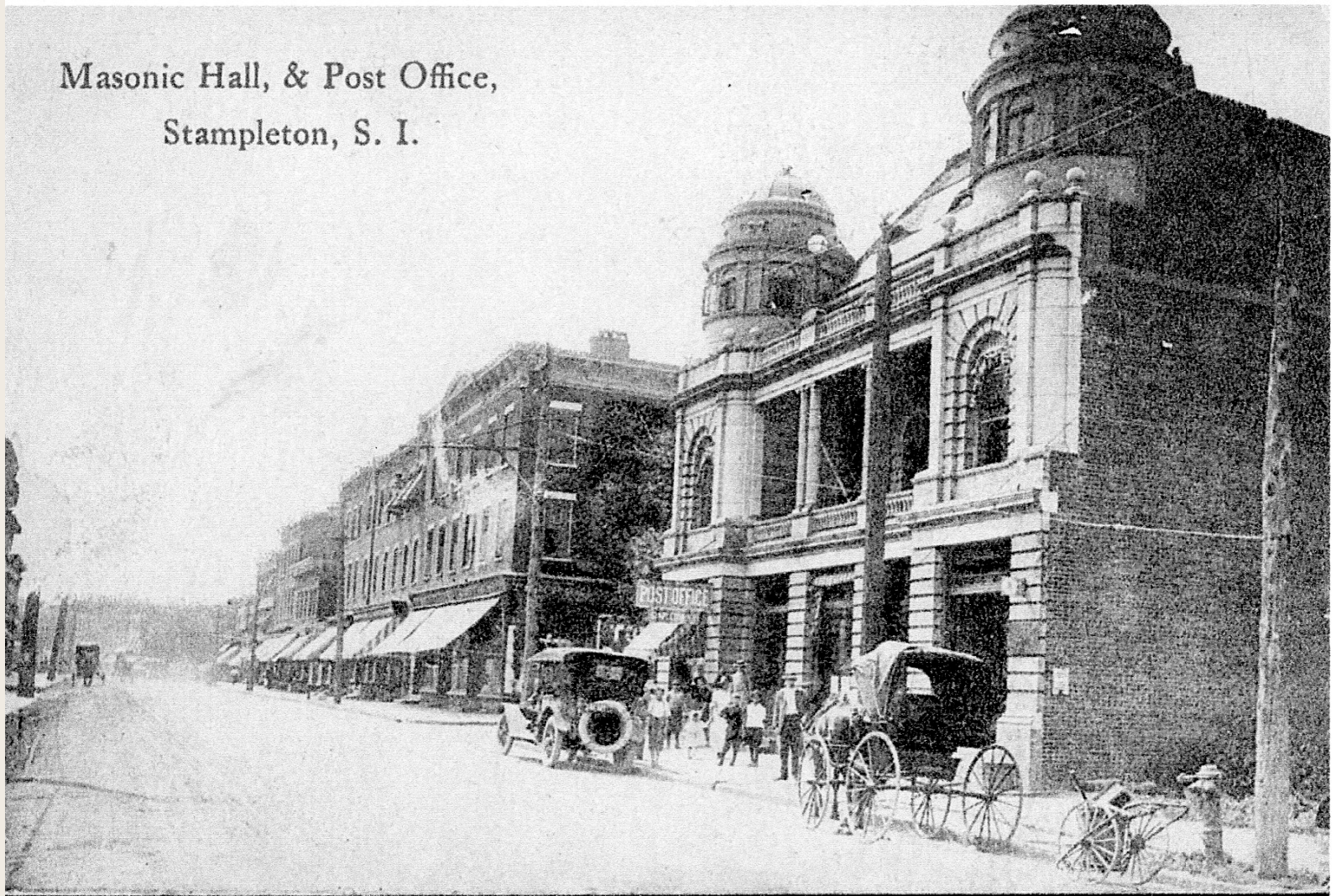
Map of Railroad and Terminal Facilities in the Port of New York, 1943.
American Dock Co./American Dock and Trust.

The Park, Tompkinsville Staten Island, N. Y.



The Park, Tompkinsville. Postcard published by W.J. Grimshaw, ca. 1925.
Staten Island Historical Society.

Masonic Hall, & Post Office,
Stampteton, S. I.



Masonic Hall, & Post Office, Stapleton, S.I. Postcard, ca. 1910. Staten Island Museum.



372 Bay Street. Photograph by Barnett Shepherd, 2015.



465 Bay Street. Photograph by Barnett Shepherd, 2015.



490 Bay Street. Photograph by Barnett Shepherd. 2015.

BAY STREET CORRIDOR AN ILLUSTRATED HISTORY

Technical Assistance by Mary Bullock

Preservation League of Staten Island
2015



Mission Statement

**The Preservation League of Staten Island
works for the conservation and continued vitality
of Staten Island's historic resources.**

Preservation, Conservation, Vitality!

www.preservestatenisland.org